

Saturn-II Series Vacuum Pumps



above with top port option 1/8" NPT

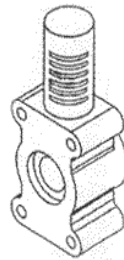
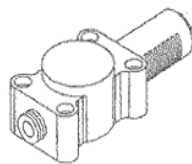
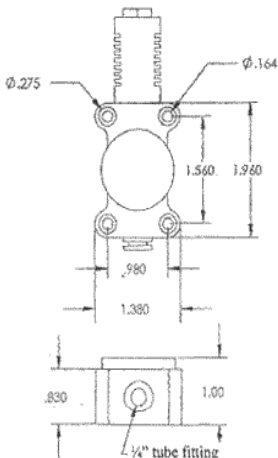
In the spirit of innovation, PVI introduces the new SATURN-II vacuum generator. The SATURN-II is a direct descendent of the popular Saturn Series and still offers all of the same great traditional characteristics within a smaller and more versatile platform. All of the features of the traditional Saturn generator are still found. You still get direct mounting capability, a built-in push-to-connect inlet port and high efficiencies. The new SATURN-II offers an aesthetically appealing body that weighs a mere 80 grams*. The low mass characteristics combine with the above features to make the SATURN-II the ultimate choice for point-of-application use.

- Choice of materials (Delrin, Acetal, Aluminum)
- Upper Gauge Port or Lower Gauge Port
- 80 psi operation

* aluminum version weighs 110 grams

The SATURN-II SERIES of generators are small and lightweight. The light construction makes them the smart choice for reciprocating and point-of-application uses due to their low mass and low profile characteristics.

The manifold mounting feature, integral muffler, and removable filter screen provide great value by leaving nothing else to buy and eliminates clumsy assemblies. These advantages do not compromise performance. PVI's SATURN-II SERIES generators, with the full circle generation feature, deliver impressive performance. All models have identical envelope dimensions and are easily interchangeable.



Saturn-II Series Vacuum Pump Models

Part#	Air Consumption	Vacuum Level @ 65psi
S2H04	2.0 scfm	27 in-Hg
S2M04	2.0 scfm	20 in-Hg
S2H05	3.1 scfm	27 in-Hg
S2M05	3.1 scfm	20 in-Hg
S2H06	3.7 scfm	27 in-Hg
S2M06	3.7 scfm	20 in-Hg
S2H07	4.9 scfm	27 in-Hg
S2M07	4.9 scfm	20 in-Hg



PNEUMATIC VACUUM INNOVATIONS
Tel: (888) 281-4784

engineering@pneumatic-vacuum.com